

377



PN25

Valvole a sfera femmina/femmina con predisposizione al rubinetto di scarico Female/female ball valves with drain cock predisposition



**NICKELATE
ESTERNAMENTE**
EXTERNALLY
NICKEL-PLATED



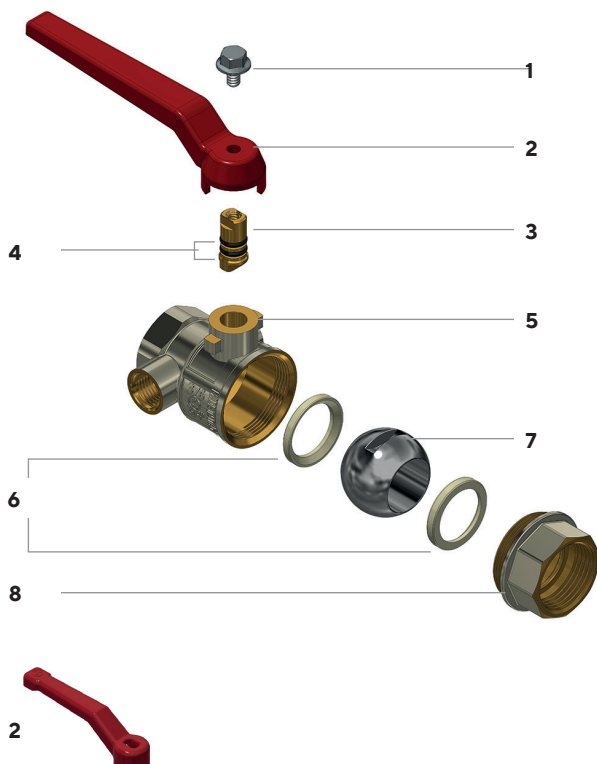
PASSAGGIO TOTALE*
FULL BORE*

Per impianti idrotermosanitari, adatte al consumo di acqua potabile. Installazione in impianti di media pressione di riscaldamento industriale, civile, impianti pneumatici, per fluidi non aggressivi.

For plumbing-heating systems and drinking water consumption. Installation in medium pressure industrial and civil heating systems, pneumatic systems and for non-aggressive fluids.

Pressione di esercizio: 25 bar
Temperatura di esercizio: -20°C +130°C (gelo escluso)
Filetti cilindrici secondo norma ISO 228-1
Tenuta sull'asta: asta assemblata dall'interno con 2 OR in EPDM PEROX
Tenuta sulla sfera con 2 sedi in PTFE
*Passaggio totale (solo valvole da 2" passaggio standard)

Working pressure: 25 bar
Working temperature: -20°C +130°C (no frost)
Cylindrical threads according to ISO 228-1
Seal on stem: stem assembled from inside with 2 EPDM PEROX OR
Seal on the ball with 2 PTFE gaskets
*Full bore (standard bore only 2" valves)

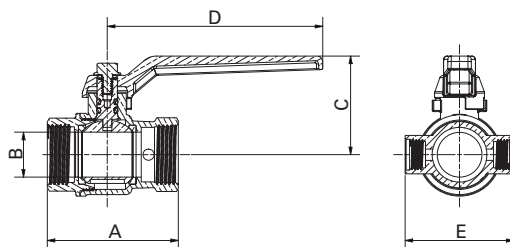




- | | |
|---|----------------------------------------------------------------------------------------------------|
| 1 | Vite in Fe-Zn/Bn |
| 2 | Leva disponibili: vedi tabelle seguenti |
| 3 | Asta in CW614N UNI EN 12164 |
| 4 | O-ring in EPDM PEROX |
| 5 | Corpo valvola CW617N UNI EN 12165 con rubinetto di scarico nichelato solo sulla superficie esterna |
| 6 | Sede in PTFE |
| 7 | Sfera in CW617N UNI EN 12165 cromata |
| 8 | Manicotto CW617N UNI EN 12165 nichelato solo sulla superficie esterna |
-
- | | |
|---|---------------------------------------------------------------------------------------|
| 1 | Fe-Zn/Bn screw |
| 2 | Available levers: see following tables |
| 3 | CW614N UNI EN 12164 stem |
| 4 | EPDM PEROX O-ring |
| 5 | CW617N UNI EN 12165 body valve with drain cock, nickel-plated on the external surface |
| 6 | PTFE gasket |
| 7 | CW617N UNI EN 12165 chrome-plated ball |
| 8 | CW617N UNI EN 12165 end adaptor, nickel-plated on the external surface |



Con leva in alluminio
With aluminium lever

ACQUA POTABILE
DRINKING WATER

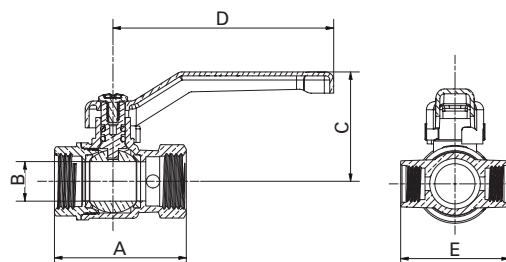




Attacchi Connections	Codice prodotto Product code		PN	A ±1mm	B mm	C mm	D mm	E mm	Conf. num. pezzi Pack. num. pieces
									
1/2"	377D1/2G5R	377D1/2G5B	25	49,5	15	42,5	95	40	10/120
3/4"	377E3/4G5R	377E3/4G5B	25	58	20	46	95	48	8/96
1"	377F001G5R	377F001G5B	25	70	25	67	115	55	4/48
1" 1/4	377G11/4G5R	377G11/4G5B	25	78	32	72,5	115	62	15
1" 1/2"	377H11/2G5R	377H11/2G5B	25	90,5	40	79	165	72,5	10
2"	377I002G5R	377I002G5B	25	104,5	45	84	165	85	10



Con leva in acciaio imbutita
With drawn steel lever

ACQUA POTABILE
DRINKING WATER



Attacchi Connections	Codice prodotto Product code		PN	A ±1mm	B mm	C mm	D mm	E mm	Conf. num. pezzi Pack. num. pieces
									
1/2"	377D1/2G1R	377D1/2G1B	25	49,5	15	42,5	83	40	8/96
3/4"	377E3/4G1R	377E3/4G1B	25	58	20	46	83	48	6/72
1"	377F001G1R	377F001G1B	25	70	25	67	90	55	4/48
1" 1/4	377G11/4G1R	377G11/4G1B	25	78	32	72,5	90	62	15
1" 1/2"	377H11/2G1R	377H11/2G1B	25	90,5	40	79	160	72,5	10
2"	377I002G1R	377I002G1B	25	104,5	45	84	160	85	10