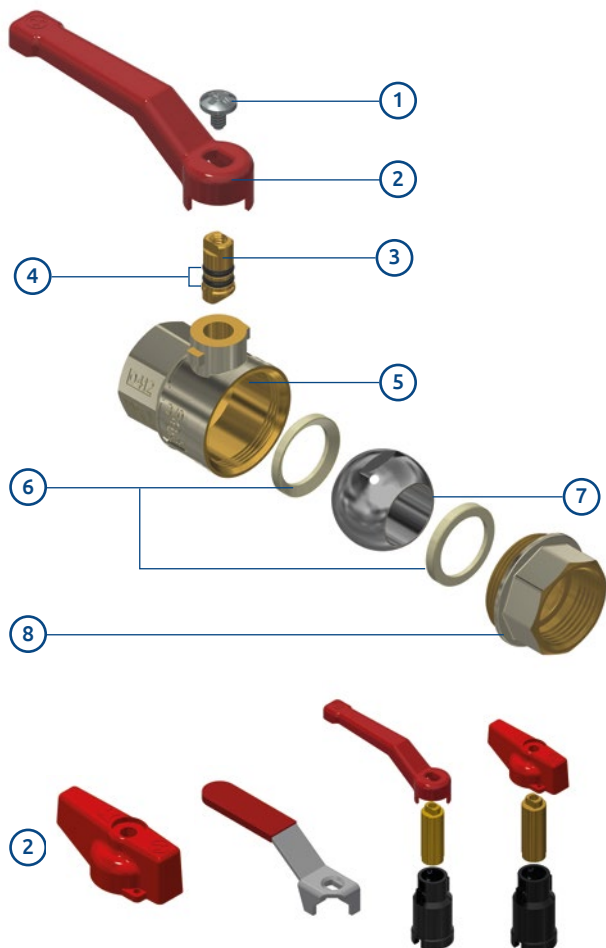


**370****Valvole a sfera femmina/femmina***Female/female ball valves***PN25**

- Valvole a sfera in ottone, nichelate solo sulla superficie esterna.
- Per impianti idrotermosanitari (adatte al consumo di acqua potabile secondo le recenti normative Europee).
- Installazione in impianti di riscaldamento industriale, civile, impianti pneumatici, per fluidi non aggressivi.
- Installazione in impianti di media pressione di distribuzione acqua.
- *Brass ball valves, nickel-plated only on the external surface.*
- *For hydro-thermo-sanitary systems (domestic water consumption according to recent European regulations).*
- *Installation in industrial and civil heating systems, pneumatic systems and for non-aggressive fluids.*
- *Installation in medium pressure water distribution systems.*

- Pressione di esercizio: 25 bar.
- Temperatura di esercizio: -20°C +130°C (gelo escluso).
- Filetti cilindrici secondo norma ISO 228-1.
- Tenuta sull'asta: asta assemblata dall'interno con 2 OR in EPDM Perox.
- Tenuta sulla sfera con 2 sedi in PTFE.
- Passaggio totale (solo valvole da 2" passaggio standard).

- *Working pressure: 25 bar.*
- *Working temperature: -20°C +130°C (excluding frost).*
- *Cylindrical threads according to ISO 228-1.*
- *Seal on stem: stem assembled from inside with 2 OR in EPDM Perox.*
- *Seal on the ball with 2 gaskets in PTFE.*
- *Full port (standard port only 2" valves).*

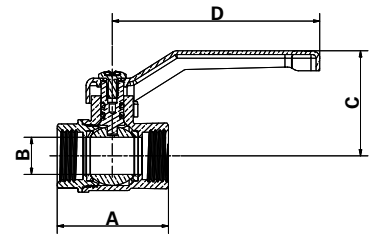


1. Vite in acciaio AISI 430.
2. Leva in acciaio, oppure:
  - manopola in alluminio;
  - leva piatta in acciaio o in acciaio inox AISI 430;
  - leva in acciaio o manopola in alluminio con prolunga in ottone CW617N UNI EN 12165 nichelato e canotto in plastica PA6 caricata 50% fibra di vetro.
3. Asta in CW614N UNI EN 12164.
4. O-ring in EPDM PEROX.
5. Corpo valvola CW617N UNI EN 12165 nichelato solo sulla superficie esterna.
6. Sede in PTFE.
7. Sfera in CW617N UNI EN 12165 cromata.
8. Manicotto CW617N UNI EN 12165 nichelato solo sulla superficie esterna.

1. *Steel AISI 430 screw.*
2. *Drawn steel lever handle or:*
  - *aluminium knob;*
  - *steel or AISI 430 stainless steel flat lever;*
  - *steel lever or aluminium knob with extension stem in brass CW617N UNI EN 12165 nickel-plated and external extension in plastic PA6 50% fiberglass loaded.*
3. *CW614N UNI EN 12164 stem.*
4. *EPDM Perox o-ring.*
5. *CW617N UNI EN 12165 body valve, nickel-plated only on the external surface.*
6. *PTFE gasket.*
7. *CW617N UNI EN 12165 chrome-plated ball.*
8. *CW617N UNI EN 12165 end adaptor, nickel-plated only on the external surface.*



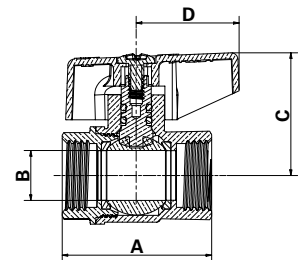
**Con leva in acciaio imbutita**  
*With drawn steel lever*



Attacchi Connections	Codice prodotto Product code		PN	A ±1mm	B mm	C mm	D mm	Conf. num. pezzi Pack. num. pieces
3/8"	<b>370C3/8G1R</b>	<b>370C3/8G1B</b>	25	37,5	11	40	83	15/180
1/2"	<b>370D1/2G1R</b>	<b>370D1/2G1B</b>	25	44,5	15	42	83	12/144
3/4"	<b>370E3/4G1R</b>	<b>370E3/4G1B</b>	25	53	20	46,5	83	8/96
1"	<b>370F001G1R</b>	<b>370F001G1B</b>	25	66	25	66,5	90	4/48
1" 1/4	<b>370G11/4G1R</b>	<b>370G11/4G1B</b>	25	75	32	72	90	15
1" 1/2	<b>370H11/2G1R</b>	<b>370H11/2G1B</b>	25	84	40	78	90	10
2"	<b>370I002G1R</b>	<b>370I002G1B</b>	25	93	45	87	160	10



**Con manopola in alluminio**  
*With aluminium knob*

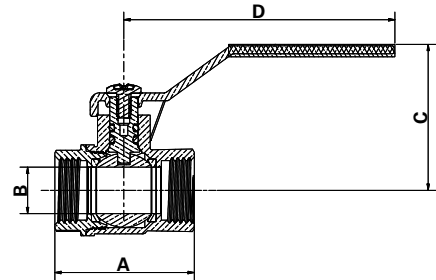



Attacchi Connections	Codice prodotto Product code		PN	A ±1mm	B mm	C mm	D mm	Conf. num. pezzi Pack. num. pieces
3/8"	<b>370C3/8G2R</b>	<b>370C3/8G2B</b>	25	37,5	11	34	31,5	15/180
1/2"	<b>370D1/2G2R</b>	<b>370D1/2G2B</b>	25	44,5	15	37	31,5	12/144
3/4"	<b>370E3/4G2R</b>	<b>370E3/4G2B</b>	25	53	20	39	31,5	10/120
1"	<b>370F001G2R</b>	<b>370F001G2B</b>	25	66	25	54	42,5	4/48
1" 1/4	<b>370G11/4G2R</b>	<b>370G11/4G2B</b>	25	75	32	59	42,5	15



### Con leva piatta in acciaio

*With steel flat lever*

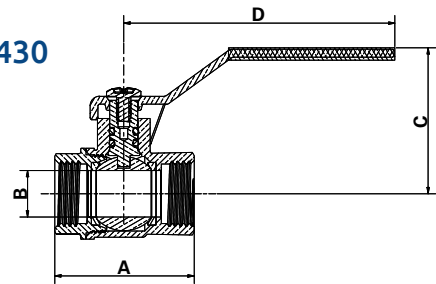



Attacchi Connections	Codice prodotto Product code	PN	A ±1mm	B mm	C mm	D mm	Conf. num. pezzi Pack. num. pieces
							
3/8"	<b>370C3/8G3R</b>	25	37,5	11	44	86,5	12/144
1/2"	<b>370D1/2G3R</b>	25	44,5	15	46,5	86,5	12/144
3/4"	<b>370E3/4G3R</b>	25	53	20	50	86,5	8/96
1"	<b>370F001G3R</b>	25	66	25	64,5	114	3/36
1" 1/4	<b>370G11/4G3R</b>	25	75	32	70	114	15
1" 1/2	<b>370H11/2G3R</b>	25	84	40	76	114	10
2"	<b>370I002G3R</b>	25	93	45	84	132	8



### Con leva piatta in acciaio INOX AISI 430

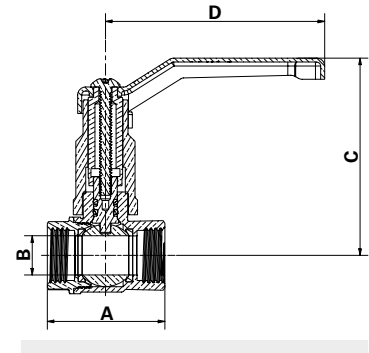
*With INOX AISI 430 steel flat lever*



Attacchi Connections	Codice prodotto Product code	PN	A ±1mm	B mm	C mm	D mm	Conf. num. pezzi Pack. num. pieces
							
3/8"	<b>370C3/8G4R</b>	25	37,5	11	44	86,5	12/144
1/2"	<b>370D1/2G4R</b>	25	44,5	15	46,5	86,5	12/144
3/4"	<b>370E3/4G4R</b>	25	53	20	50	86,5	8/96
1"	<b>370F001G4R</b>	25	66	25	64,5	114	3/36
1" 1/4	<b>370G11/4G4R</b>	25	75	32	70	114	15
1" 1/2	<b>370H11/2G4R</b>	25	84	40	76	114	10
2"	<b>370I002G4R</b>	25	93	45	84	132	8



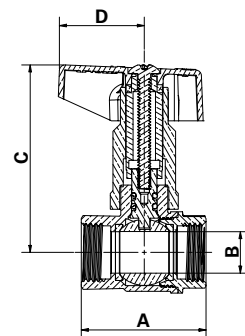
**Con prolunga e leva in acciaio**  
*With extension stem and steel lever*



Attacchi Connections	Codice prodotto Product code		PN	A ±1mm	B mm	C mm	D mm	Conf. num. pezzi Pack. num. pieces
1/2"	<b>370D1/2G1RFM</b>	<b>370D1/2G1BFM</b>	25	44,5	15	75	83	40
3/4"	<b>370E3/4G1RF</b>	<b>370E3/4G1BF</b>	25	53	20	78	83	30
1"	<b>370F001G1RF</b>	<b>370F001G1BF</b>	25	66	25	104	90	30
1" 1/4	<b>370G11/4G1RF</b>	<b>370G11/4G1BF</b>	25	75	32	109,5	90	20
1" 1/2	<b>370H11/2G1RF</b>	<b>370H11/2G1BF</b>	25	84	40	116	90	16
2"	<b>370I002G1RF</b>	<b>370I002G1BF</b>	25	93	45	137	160	10



**Con prolunga e manopola in alluminio**  
*With extension stem and aluminium knob*



Attacchi Connections	Codice prodotto Product code		PN	A ±1mm	B mm	C mm	D mm	Conf. num. pezzi Pack. num. pieces
1/2"	<b>370D1/2G2RFM</b>	<b>370D1/2G2BFM</b>	25	44,5	15	69	31,5	40
3/4"	<b>370E3/4G2RF</b>	<b>370E3/4G2BF</b>	25	53	20	71	31,5	30
1"	<b>370F001G2RF</b>	<b>370F001G2BF</b>	25	66	25	76,5	42,5	30
1" 1/4	<b>370G11/4G2RF</b>	<b>370G11/4G2BF</b>	25	75	32	101,5	42,5	20